

# The Prairie Times

Fall 2025

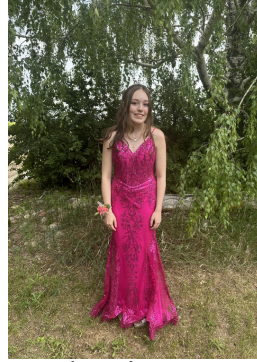


**PRAIRIE PRIDE**  
CREDIT UNION

## University Scholarship Recipients



Karley Halliday  
CEC



Abigail Simons  
OPHS

## Lynette Peet Legacy Fund Recipients



Lexie Chapman  
Arcola School



Leta Schulz  
CEC



Alivia Schulhauser  
OPHS

## Gordon Doan Scholarship Recipients



Anna Redpath  
CEC

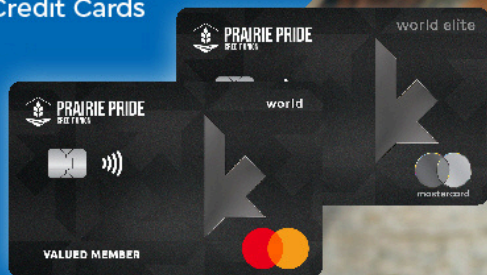


Keagan Patton  
OPHS

**Closed September 30- National Day for Truth and Reconciliation**

**Closed October 13- Thanksgiving**

**Closed November 11- Remembrance Day**



Get rewarded this fall!

Earn up to 40,000 Flex Rewards points – that's up to \$400 in value!\*

\*Terms and Conditions apply. Offer ends Oct 31, 2025.

Check out our current credit card promotions with our partner Collabria Financial.

New personal premium cardholders can earn up to 40,000 Flex Rewards points - that's up to \$400 in value, while new business premium cardholders can unlock up to 50,000 Flex Rewards points - that's up to \$500 in value!

Between September 01 and September 30, 2025, any new and existing consumer cardholders who register for eStatements will be eligible to receive a statement credit of \$10 CAD (USD cardholders will receive 1000 Flex Rewards points in lieu of a statement credit).

Speak to a staff member for more information.

~ CREDIT CARDS ~

Cut paper waste,  
not trees.

Go paperless today.  
Switch to eStatements and receive  
a \$10 statement credit\*.



**PRAIRIE PRIDE**  
CREDIT UNION

\*Terms and Conditions apply.



For full details on any events or programs go to our web page at:

**[www.prairiepridecu.com](http://www.prairiepridecu.com)**



You can also follow us on Facebook or Instagram for any announcements!



**Alameda Branch**  
**306-489-2131**

**Alida Branch**  
**306-443-2225**

**Gainsborough Branch**  
**306-685-2212**